

ELETTROVALVOLA A RIARMO MANUALE NORM. APERTA PER GAS
 NORMALLY OPEN MANUAL RESET SOLENOID VALVE FOR GAS
 ÉLECTROVANNE A RÉARMEMENT MANUEL NORMALEMENT OUVERT POUR GAZ
 ELECTROVÁLVULA CON REARME MANUAL NORMALMENTE ABIERTA PARA GAS


MADE IN ITALY

	IT	EN	FR	ES
Pressione massima di esercizio Maximum operating pressure Pression maximum de fonctionnement Presión máxima de funcionamiento	6 bar (600 kPa)			
Attacchi filettati Threaded connections Raccords filetés Conexiones roscadas	DN 20 - DN 25 - DN 32 - DN 40 - DN 50			
Attacchi flangiati Flanged connections Raccords à brides Conexiones embreadas	DN 25* - DN 32 - DN 40 - DN 50			
	* su richiesta con flange girevoli	* with swivel flanges on request	* sur demande avec brides pivotantes.	* bajo petición con bridas locas
In conformità a In conformity with Conforme a Conforme	Direttiva PED 2014/68/UE	PED Directive 2014/68/EU	Directive PED 2014/68/UE	Directiva PED 2014/68/UE

1.0 - GENERAL INFORMATION

This manual shows you how to safely install, operate and use the device.

The instructions for use **ALWAYS** need to be available in the facility where the device is installed.

ATTENTION: installation/wiring/maintenance need to be carried out by qualified staff (as explained in section 1.3) using appropriate personal protective equipment (PPE).

For any information pertaining to installation/wiring/maintenance or in any case problems that cannot be resolved with the use of the instructions, it is possible to contact the manufacturer from the address and phone numbers provided on the last page.

1.1 - DESCRIPTION

Normally open, manual reset solenoid valves for gas, suitable to shut-off gas and signal danger sent by gas detectors (methane, LPG, carbon monoxide and similar), safety thermostats, etc.

They can only be reset manually and only when they are not electrically powered.

1.2 - KEY OF SYMBOLS



DANGER: In the event of inobservance, may be caused damages to tangible goods.



DANGER: In the event of inobservance, may be caused damages to tangible goods, to people and/or pets.



ATTENTION: Attention is drawn to the technical details intended for qualified staff.

1.3 - QUALIFIED STAFF

These are people who:

- Are familiar with product installation, assembly, start-up and maintenance;
- Know the regulations in force in the region or country pertaining to installation and safety;
- Are trained in first aid.



1.4 - USING NON-ORIGINAL SPARE PARTS

- To perform maintenance or change parts (ex. coil, connector, etc.) **ONLY** manufacturer-recommended parts can be used. Using different parts not only voids the product warranty, it could compromise correct device operation.
- The manufacturer is not liable for malfunctions caused by unauthorised tampering or use of non-original parts.



1.5 - IMPROPER USE

- The product must only be used for the purpose it was built for.
- It is not allowed to use different fluids than those expressly stated.
- The technical data set forth on the rating plate must not be exceeded whatsoever. The end user or installer is in charge of implementing proper systems to protect the device, which prevent exceeding the maximum pressure indicated on the plate.
- The manufacturer is not responsible for any damage caused by improper use of the device.

2.0 - TECHNICAL DATA

· Use	: non-aggressive gases of the three families (dry gases)
· Ambient temperature (TS)	: -20 ÷ +60 °C
· Power voltages (see table 2)	: 12 Vdc - 12 V/50 Hz - 24 Vdc - 24 V/50 Hz - 110 V/50-60 Hz - 230 V/50-60 Hz*
· Power supply tolerance	: -15% ... +10%
· Electric wiring	: cable gland M20x1.5
· Absorbed power	: see table 2
· Maximum operating pressure	: 6 bar (600 kPa)
· Closing time	: < 1 s
· Protection rating	: IP65
· Mechanical resistance	: Group 2 (according to EN 13611)
· Rp threaded connections	: (DN 20 - DN 25 - DN 32 - DN 40 - DN 50) according to EN 10226
· Flanged connections to be coupled with PN 16 flanges	: (DN 25** - DN 32 - DN 40 - DN 50) ISO 7005 / EN 1092-1
· NPT threaded or ANSI flanged connections	: on request
· In compliance with	: PED Directive 2014/68/EU - EMC Directive 2014/30/EU LVD Directive 2014/35/EU - RoHS II Directive 2011/65/EU

* Only single-phase, the device does not work if powered with three-phase voltage.

** DN 25 with swivel flanges.

3.0 - COMMISSIONING THE DEVICE



3.1 - OPERATIONS PRIOR TO INSTALLATION

- It is necessary to close the gas upstream of the valve prior to installation;
- Make sure that the line pressure **DOES NOT EXCEED** the maximum pressure declared on the product label;
- Any protective caps (if any) must be removed prior to installation;
- Valve pipes and insides must be clear of any foreign bodies;
 - If the device is threaded:
 - make sure that the pipe thread is not too long, to prevent damaging the body of the device when screwing it on;
 - If the device is flanged:
 - make sure the inlet and outlet counter-flanges are perfectly coaxial and parallel in order to prevent unnecessary mechanical stress to the body. Also calculate the space to insert the seal gasket;
 - With regard to tightening operations, equip yourself with one or two calibrated torque wrenches or other controlled locking tools;
- In accordance with EN 161 a suitable filter must be installed upstream of a gas closing safety device;
- With outdoor installation, it is advisable to provide a protective roof to prevent rain from damaging the electrical parts of the device.
- Prior to carrying out any electrical wiring operations, make sure that the main voltage matches the supply voltage indicated on the product label;



- Cut out power prior to proceeding with wiring;
- According to the plant geometry, check the risk of explosive mixture arising inside the piping;
- If the solenoid valve is installed near other devices or as part of an assembly, compatibility between the solenoid valve and this other device must be evaluated beforehand.
- Avoid installing the solenoid valve near surfaces that could be damaged by the coil temperature;
- Provide a protection against impacts or accidental contacts if the solenoid valve is accessible to unqualified personnel.



3.2 - INSTALLATION (see example in 3.4)

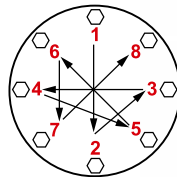
Threaded devices:

- Assemble the device by screwing it, with the due seals, onto the plant with pipes and/or fittings with the right threading for the connection being attached.
- Do not use the coil (4) as a lever to help you screw it on, only use the specific tool;
- The arrow, shown on the body (9) of the device, needs to be pointing towards the application;

Flanged devices:

- Assemble the device by flanging it, with the due seals, onto the plant with pipes whose flanges are consistent with the connection being attached. The gaskets must be free from defects and must be centred between the flanges;
- If, after installing the gaskets, there is still an excessive space in between, do not try to reduce the said gap by excessively tightening the bolts of the device;
- The arrow, shown on the body (9) of the device, needs to be pointing towards the application;
- Insert the relative washers inside the bolts in order to prevent damage to the flanges during tightening;
- When tightening, be careful not to "pinch" or damage the gasket;
- Tighten the nuts or bolts gradually, in a "cross" order (see the example below);
- Tighten them, first by 30%, then by 60%, and finally 100% of the maximum torque (see the table below according to EN 13611);

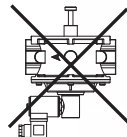
Diameter	DN 25	DN 32	DN 40	DN 50
Max. torque (N.m)	30	50	50	50



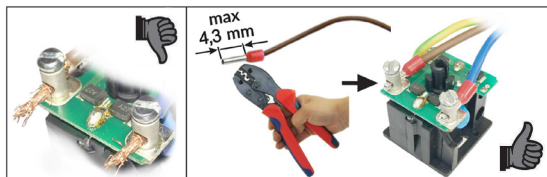
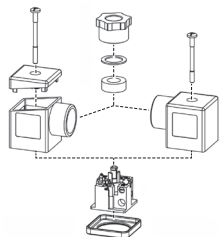
- Tighten each nut and bolt again clockwise at least once, until the maximum torque has been achieved uniformly;

Common procedures (threaded and flanged devices):

- The device can also be installed vertically without prejudicing the correct operation. It cannot be put in upside down (with the reset handgrip (10) pointing upwards);
- During installation, avoid debris or metal residues from getting into the device;
- To guarantee mechanical tension-free assembly, we recommend using compensating joints, which also adjust to the pipe's thermal dilation;
- If the device is to be installed in a ramp, it is the installer's responsibility to provide suitable supports or correctly sized supports, to properly hold and secure the assembly. Never, for any reason whatsoever, leave the weight of the ramp only on the connections (flanged or threaded) of the individual devices;
- In any case, following installation, check the tightness of the plant;
- Wiring cannot have cables connected directly to the coil. **ALWAYS and ONLY** use the connector identified by the manufacturer;



- Before wiring the connector (3), unscrew and remove the central screw (2). Use the proper cable terminals (see figures below). **NOTE:** Connector (3) wiring must be done ensuring a product rating of IP65;
- Wire the connector (3) with 3x0.75mm² cable for external Ø 6.2 to 8.1 mm. The cable to be used must be in double sheath, suitable for outdoor use, with a minimum voltage of 500V and a temperature of at least 60 °C;



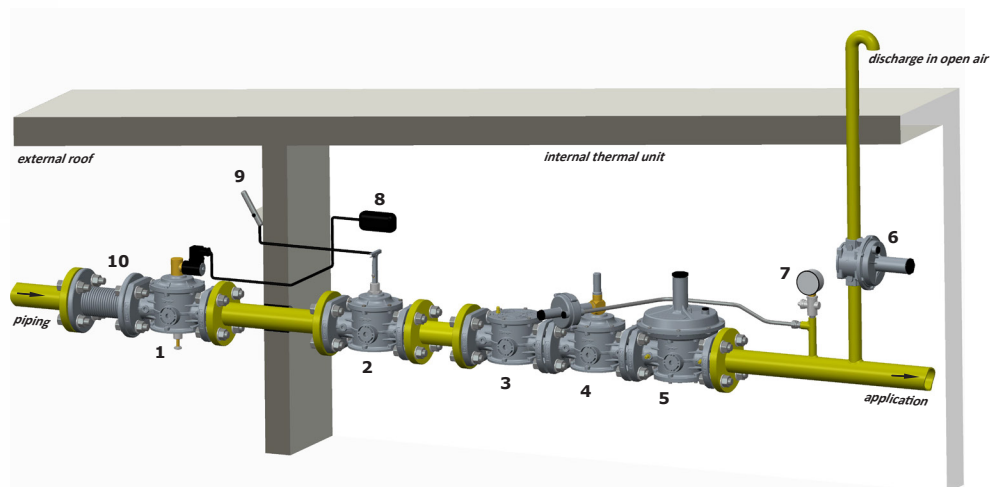
- Connect terminals 1 and 2 to the power supply and the earth cable to terminal \perp ;
- Secure the connector (3) to the coil (4), tightening (recommended tightening torque 0.4 N.m \pm 10%) the clamping screw (2);
- The valve needs to be connected to earth either through the pipe or through other means (ex. cable jumpers).

3.3 - INSTALLATION IN PLACES WHERE THERE IS THE RISK OF EXPLOSION (DIRECTIVE 2014/34/EU)

The solenoid valve is not suitable for use in zones where there is the risk of explosion.

3.4 - GENERIC EXAMPLE OF AN INSTALLATION

- | | |
|--|---|
| <ol style="list-style-type: none"> 1. M16/RM N.A. Manual reset solenoid valve 2. SM jerk ON/OFF valve 3. FM gas filter 4. OPSO series MVB/1 MAX shut off valve 5. RG/2MC pressure regulator | <ol style="list-style-type: none"> 6. MVS/1 relief valve 7. Pressure gauge and relative button 8. Gas detector 9. SM remote jerk ON/OFF valve lever control 10. Compensation/Vibration damping joint |
|--|---|





4.0 - MANUAL RESET

To reset the solenoid valve:

- Make sure the valve is **NOT** electrically powered;
- Close the flow downstream of the solenoid valve in order to balance the pressure between upstream and downstream when opening;
- Push the reset handgrip (**10**) and wait an instant to balance the pressure from and to the user's up to the hooking;
- After balancing the pressures, press the reset handgrip (**10**) until it connects.



5.0 - FIRST START-UP



- Before start-up make sure that all of the instructions on the rating plate, including the direction of flow, are observed;
- After having gradually pressurized the system, check the seal and operation of the solenoid valve, electrically powering / disconnecting the connector **ONLY IF** connected to the coil.

IMPORTANT NOTE: Do not use the connector as a switch to close the solenoid valve.

- Make sure the solenoid valve is closed by electrically connecting it.



5.1 - RECOMMENDED PERIODIC CHECKS

- Use a suitable calibration tool to ensure the bolts are tightened as indicated in 3.2;
 - Check tightness of the flanged/threaded connections on the system;
 - Check tightness and operation of the solenoid valve;
- It is the responsibility of the final user or installer to define the frequency of these checks based on the severity of the service conditions.



6.0 - MAINTENANCE

On completion of the operations described below, repeat the procedure indicated in paragraph 5.

If the coil and/or connector need to be replaced (see fig. 1 to 3):



- Before performing any operation, make sure that the device is not electrically powered;

NOTE: if the coil (**4**) needs to be changed following an electrical failure, we recommend changing the connector (**3**) as well. The coil and/or connector replacement operations need to be carried out taking care to ensure the product's IP65 rating.



6.1 - REPLACING THE CONNECTOR

- Unscrew and remove the central screw (**2**), then remove the connector (**3**) from the coil (**4**);
- When you have taken out the existing internal electrical wiring, wire the new connector and secure it to the coil, as shown in 3.2



6.2 - REPLACING THE COIL

- Unscrew and remove the central screw (**2**), then remove the connector (**3**) from the coil (**4**);
- Loosen the screw (**5**) that locks the coil (**4**) and take it out of the armature assembly (**1**) along with the gaskets/discs;
- Place the new coil + gaskets + discs inside the armature assembly (**1**) and secure with the relative screw;
- Couple the connector to the coil and secure it as indicated in 3.2;
- If it is necessary to set up the wiring, proceed as described in 3.2.

NOTE: No maintenance operations need to be carried out inside the device.

7.0 - TRANSPORT, STORAGE AND DISPOSAL

- During transport the material needs to be handled with care, avoiding any impact or vibrations to the device;
- If the product has any surface treatments (ex. painting, cathaphoresis, etc) it must not be damaged during transport;
- The transport and storage temperatures must observe the values provided on the rating plate;
- If the device is not installed immediately after delivery it must be correctly placed in storage in a dry and clean place;
- In humid facilities, it is necessary to use driers or heating to avoid condensation.
- At the end of its service life, the product is to be disposed of separately from other waste (WEEE directive 2012/19/EU) and in compliance with the legislation in force in the country where this operation is performed.



8.0 - WARRANTY

The warranty conditions agreed with the manufacturer at the time of the supply apply.

For damage caused by:

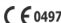
- Improper use of the device;
- Failure to observe the requirements described herein;
- Failure to observe the regulations pertaining to installation;
- Tampering, modification and use of non-original spare parts;


are not covered by the rights of the warranty or compensation for damage.

The warranty also excludes maintenance work, other manufacturers's assembling units, making changes to the device and natural wear.

9.0 - RATING PLATE DATA

The plate data (see examples provided here) includes the following:

- Manufacturer's name/logo and address (possible distributor name/logo)
- Mod.: = name/model of the device followed by the diameter size
- P. max = Maximum pressure at which product operation is guaranteed
- PS = Allowable maximum pressure
- IP... = Protection rating
- 230V... = Power supply voltage, frequency (if Vac), followed by electrical absorption
- TS = Temperature range within which product operation is guaranteed
-  = In compliance with PED Dir. followed by Notified Body No.
- year = Year of manufacture

- Lot = Product serial number (see explanation below)
 - U1745 = Lot issued in year 2017 in the 45th week
 - 25407 = progressive job order number for the indicated year
 - 00001 = progressive number referred to the quantity of the lot
-  = Disposal in accordance with WEEE directive 2012/19/EU

MADAS[®]
s.r.l.

Via Moratello, 5/6/7
37045 - Legnago
(VR) Italy

Mod.: **M16/RM N.A. DN 50**
P.max=P5= 6 bar (600 kPa)

IP65 - 230 V/50-60 Hz 23 VA

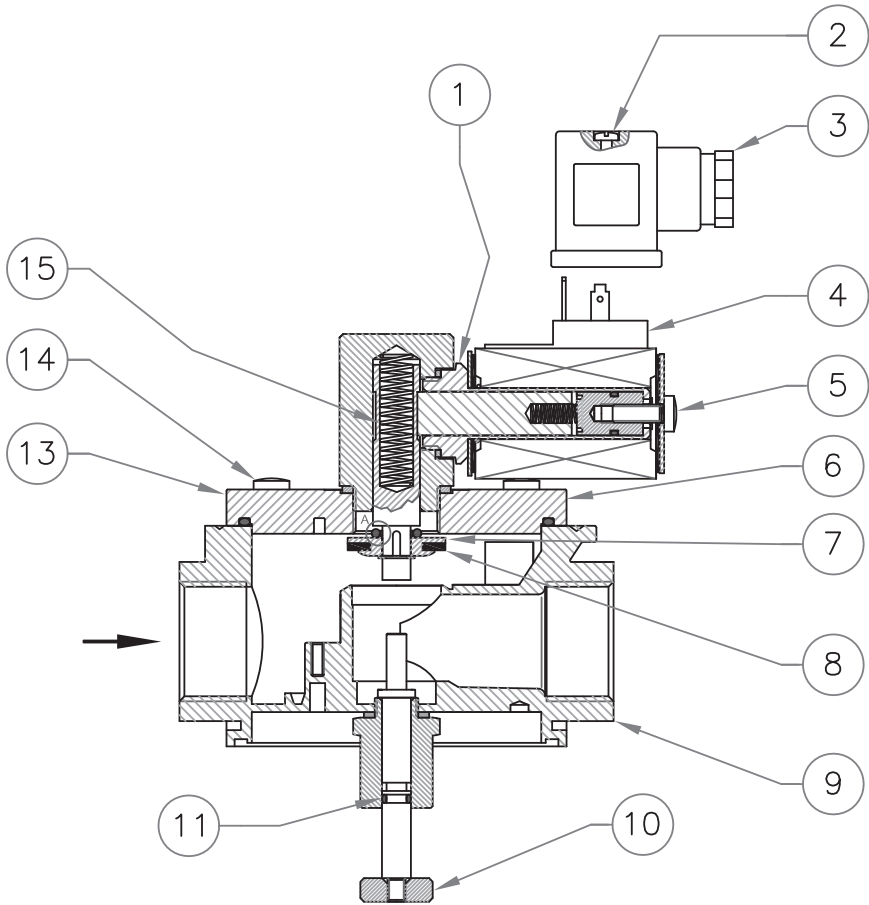


Year: 2017 Lot: U1745 25407/00001

T5: -20+60°C



fig. 1
Rp DN 20 - Rp DN 25



IT

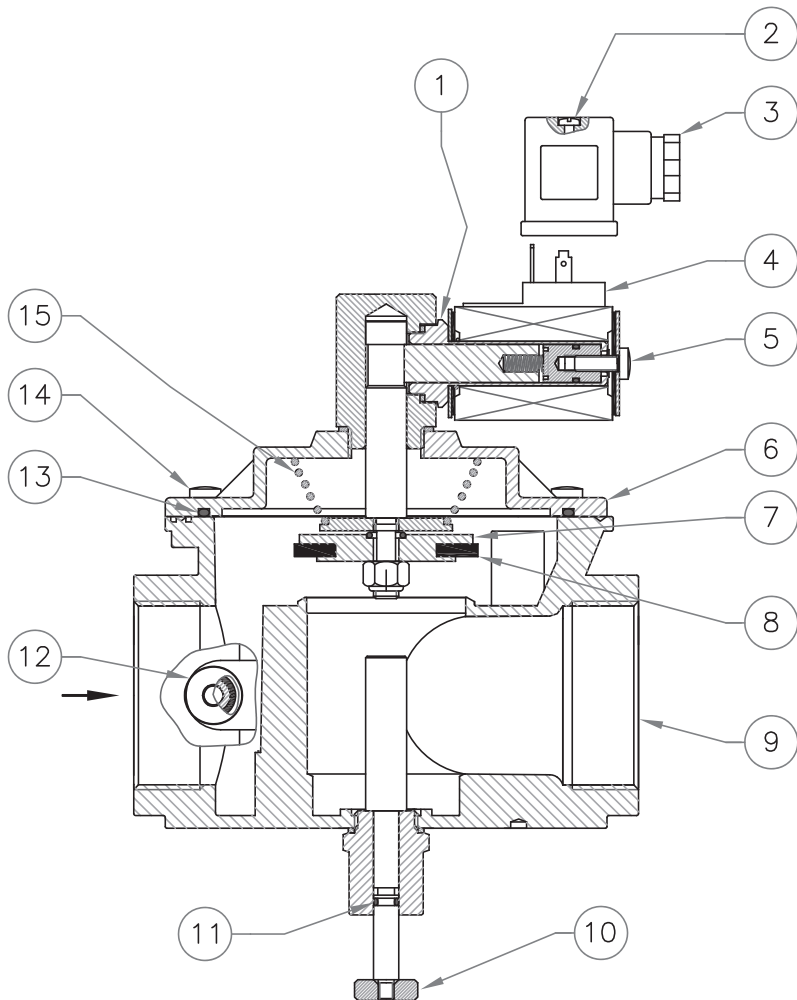
EN

FR

ES

fig. 2

Rp DN 32 - Rp DN 40 - Rp DN 50



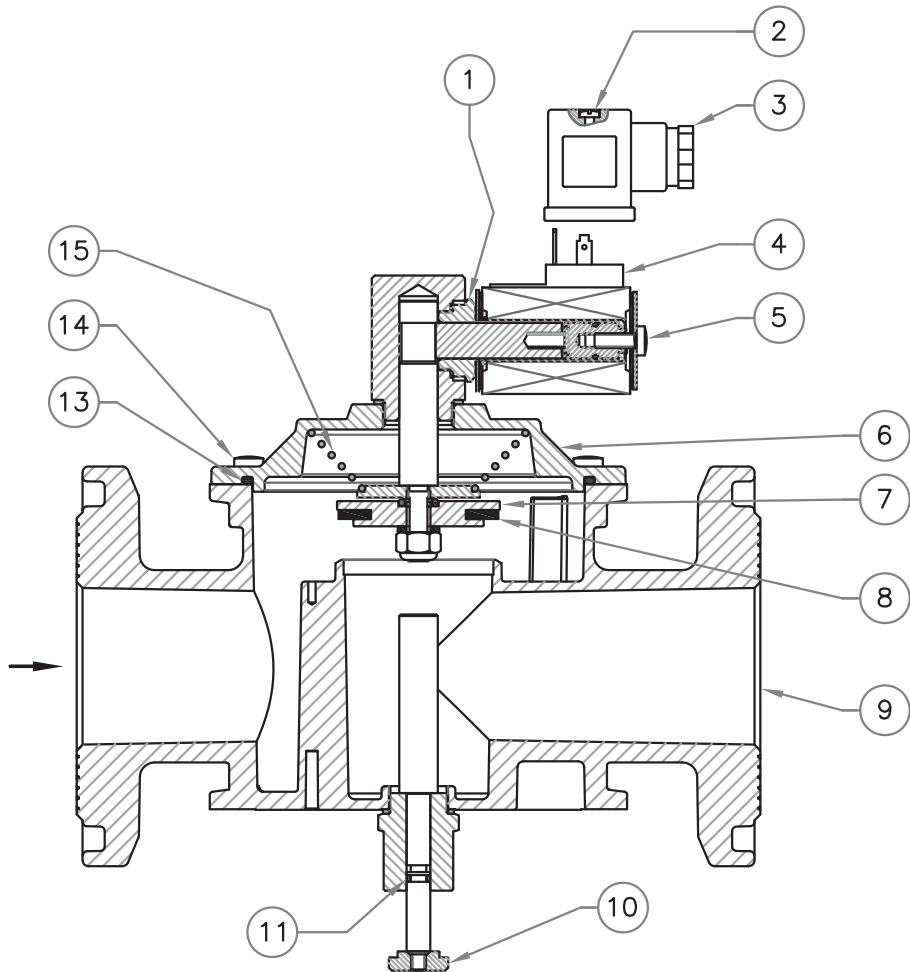
IT

EN

FR

ES

fig. 3
DN 32 FL - DN 40 FL - DN 50 FL



IT

EN

FR

ES

IT

fig. 1, 2 e 3

1. Cannotto bobina
2. Vite fissaggio connettore
3. Connettore elettrico
4. Bobina
5. Vite fissaggio bobina
6. Coperchio
7. Otturatore
8. Rondella di tenuta
9. Corpo valvola
10. Manopola di riarmo
11. O-Ring di tenuta
12. Tappo G 1/4 (optional)
13. O-Ring di tenuta coperchio
14. Viti di fissaggio coperchio
15. Molla di chiusura

EN

fig. 1, 2 and 3

1. Coil armature assembly
2. Connector clamping screw
3. Electric connector
4. Coil
5. Coil clamping screw
6. Cover
7. Obturator
8. Sealing washer
9. Valve body
10. Reset handgrip
11. Sealing O-Ring
12. Cap G 1/4 (optional)
13. Cover sealing O-Ring
14. Cover clamping screws
15. Closing spring

FR

fig. 1, 2 et 3

1. Fourreau de la bobine
2. Vis de fixation du connecteur
3. Connecteur électrique
4. Bobine
5. Vis de fixation de la bobine
6. Couvercle
7. Obturateur
8. Rondelle d'étanchéité
9. Corps de vanne
10. Bouton rotatif de réarmement
11. Joint torique d'étanchéité
12. Bouchon G 1/4 (en option)
13. Joint torique d'étanchéité du couvercle
14. Vis de fixation du couvercle
15. Ressort de fermeture

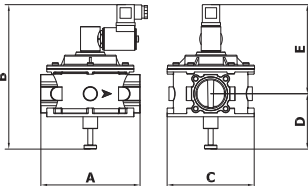
ES

fig. 1, 2 y 3

1. Manguito bobina
2. Tornillo de fijación del conector
3. Conector eléctrico
4. Bobina
5. Tornillo de fijación de la bobina
6. Tapa
7. Obturador
8. Arandela de estanqueidad
9. Cuerpo de la válvula
10. Bóton de rearme
11. Junta tórica de estanquidad
12. Tapón G 1/4 (opcional)
13. Junta tórica de estanquidad tapa
14. Tornillos de fijación de la tapa
15. Muelle de cierre

Tabella 1 - Table 1 - Tableau 1 - Tabla 1

Dimensioni di ingombro in mm - Overall dimensions in mm - Dimensions d'encombrement en mm - Dimensiones totales en mm

	Attacchi filettati Threaded connections Raccords filetés Conexiones roscadas	Attacchi flangiati Flanged connections Raccords à brides Conexiones bridadas	fori holes trous orificios	A	B	C	D	E
	DN 20 - DN 25	-	-	-	120	158	94	72
DN 32 - DN 40	-	-	-	160	240	140	88,5	151,5
DN 50	-	-	-	160	265	140	96,5	168,5
-	PN 16 - ANSI 150 DN 25	4	191	198	115	72	126	
-	PN 16 - DN 32	4	230	267	165	101,5	165,5	
-	PN 16 - ANSI 150 DN 40 - DN 50	4	230	267	165	101,5	165,5	

Le dimensioni sono indicative, non vincolanti - The dimensions are provided as a guideline, they are not binding
Les dimensions sont indicatives et non pas contractuelles - Las dimensiones son indicativas, no vinculantes

Tabella 2 - Table 2 - Tableau 2 - Tabla 2

Bobine e connettori per elettrovalvole **M16/RM N.A.**
Coils and connectors for **M16/RM N.A.** solenoid valves
Bobines et connecteurs pour électrovannes **M16/RM N.A.**
Bobinas y conectores para electroválvulas **M16/RM N.A.**

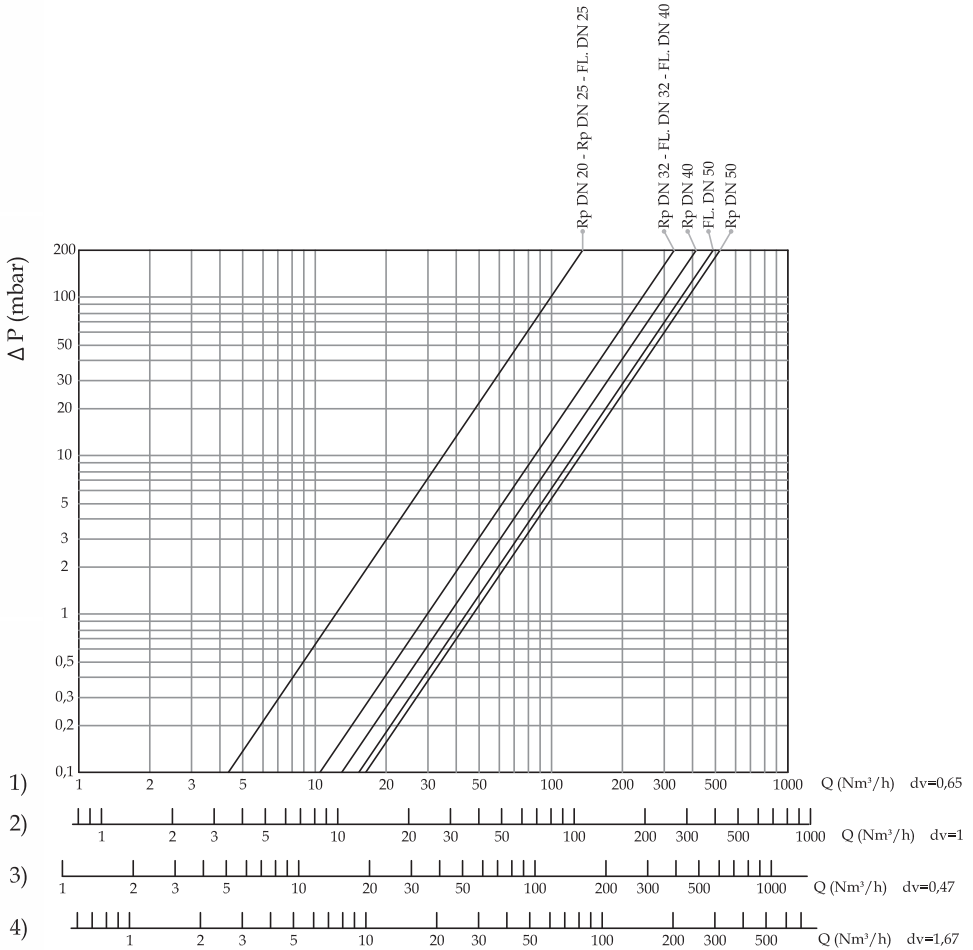
Ø	Voltaggio Voltage Voltage Voltaje	Codice bobina Coil code Code de la bobine Código de la bobina	Timbratura bobina Coil stamp Estampillage de la bobine Marcado de la bobina	Codice connettore Connector code Code du connecteur Código del conector	Potenza assorbita Absorbed power Puissance absorbée Potencia absorbida
DN 20 ÷ DN 50	12 Vdc	BO-0010	BO-0010 12 V DC	CN-0010	20 VA
	12 V/50 Hz	BO-0010	BO-0010 12 V DC	CN-0050	20 VA
	24 Vdc	BO-0020	BO-0020 24 V DC	CN-0010	21 VA
	24 V/50 Hz	BO-0070	BO-0070 24 V 50 Hz D	CN-0010	22 VA
	110 V/50-60 Hz	BO-0105	BO-0105 110 V 50-60 Hz D	CN-0010	21 VA
	230 V/50-60 Hz	BO-0110	BO-0110 230 V 50-60 Hz D	CN-0010	23 VA

Tipo connettore / Connector type / Type de connecteur / Tipo de conector

CN-0010 = Normale / Normal / Normal / Normal

CN-0050 = (12 Vac) = Raddrizzatore / Rectifier / Redresseur / Rectificador

Diagramma calcolato con P1 = 50 mbar (5 kPa)
Diagram calculated with P1 = 50 mbar (5 kPa)
Diagramme calculé avec P1 = 50 mbar (5 kPa)
Tabla de pérdidas de carga calculado con P1 = 50 mbar (5 kPa)



dv = densità relativa all'aria
 dv = density relative to the air
 dv = densité relative à l'air
 dv = densidad relativa del aire

- 1) metano - methane - méthane - metano
- 3) gas di città - town gas - gaz de ville - gas de ciudad
- 2) aria - air - air - aire
- 4) gpl - lpg - GPL - gas líquido

ATTACCHI FILETTATI NPT / NPT THREADED CONNECTIONS
RACCORDS FILETÉS NPT / CONEXIONES ROSCADAS NPT

richiedere fattibilità / request feasibility / demander la faisabilité / consulte la disponibilidad

Aggiungere la lettera "N" dopo le cifre indicanti gli attacchi	Add the letter "N" after figures denoting the connection	Ajouter la lettre "N" après les chiffres indiquant les connexions	Añadir la letra "N" a continuación de las cifras que indican los diámetros de conexión	Es. / E.g. / Ex. / Ej. RM07 N 0000 008
---	---	--	---	--

ATTACCHI FLANGIATI ANSI 150 / ANSI 150 FLANGED CONNECTIONS
RACCORDS À BRIDES ANSI 150 / CONEXIONES EMBRIDADAS ANSI 150

richiedere fattibilità / request feasibility / demander la faisabilité / consulte la disponibilidad

Aggiungere la lettera "A" dopo le cifre indicanti gli attacchi	Add the letter "A" after figures denoting the connection	Ajouter la lettre "A" après les chiffres indiquant les connexions	Añadir la letra "A" a continuación de las cifras que indican los diámetros de conexión	Es. / E.g. / Ex. / Ej. RM50 A 0000 008
---	---	--	---	--

BIOGAS

richiedere fattibilità / request feasibility / demander la faisabilité / consulte la disponibilidad

Aggiungere la lettera "B" dopo le cifre indicanti gli attacchi	Add the letter "B" after figures denoting the connection	Ajouter la lettre "B" après les chiffres indiquant les connexions	Añadir la letra "B" a continuación de las cifras que indican los diámetros de conexión	Es. / E.g. / Ex. / Ej. RM07 B 0000 008
---	---	--	---	--

ELASTOMERI IN FKM (Viton) / ELASTOMERS IN FKM (Viton)
ÉLASTOMÈRES EN FKM (Viton) / ELASTÓMEROS DE FKM (Viton)

Aggiungere la lettera "V" dopo le cifre indicanti gli attacchi	Add the letter "V" after figures denoting the connection	Ajouter la lettre "V" après les chiffres indiquant les connexions	Añadir la letra "V" a continuación de las cifras que indican los diámetros de conexión	Es. / E.g. / Ex. / Ej. RM07 V 0000 008
---	---	--	---	--

CATAFORESI / CATAPHORESIS
CATAPHORÈSE / CATAFORESIS

Aggiungere la lettera "K" dopo le cifre indicanti gli attacchi	Add the letter "K" after figures denoting the connection	Ajouter la lettre "K" après les chiffres indiquant les connexions	Añadir la letra "K" a continuación de las cifras que indican los diámetros de conexión	Es. / E.g. / Ex. / Ej. RM07 K 0000 008
---	---	--	---	--

CONNETTORI CON LED / CONNECTORS WITH LED
CONNECTEURS AVEC LED / CONECTOR CON LED

Aggiungere la lettera "L" prima delle cifre che indicano il voltaggio	Add the letter "L" before figures denoting the voltage	Ajouter la lettre "L" après les chiffres indiquant le voltage	Añadir la letra "L" a continuación de las cifras que indican el voltaje	Es. / E.g. / Ex. / Ej. RM070000 L 008
--	---	--	--	---

COMBINAZIONI POSSIBILI / POSSIBLE COMBINATIONS
COMBINAISONS POSSIBLES / POSSIBLES COMBINACIONES

È possibile combinare tra di loro le versioni. Non serve indicare "BV" in quanto "B" include "V"	It is possible to combine the above mentioned versions. It is not needed to state "BV" as the letter "B" includes "V" too	Les versions peuvent être combinées entre elles. Il n'est pas nécessaire d'indiquer "BV" car "B" comprend "V"	Es posible combinar las versiones entre sí. No es necesario indicar "BV" , dado que "B" incluye "V"	Es. / E.g. / Ex. / Ej. RM07 BK 0000 008
---	--	--	--	---

NOTA: È possibile che alcuni modelli non siano disponibili nelle versioni suddette sia singole e/o combinate. È consigliato chiedere SEMPRE la fattibilità.

NOTE: It is possible certain models are not available on the above mentioned versions, both singles and/or combined too. We suggest to ask ALWAYS for the feasibility.

NOTE: Il est possible que certains modèles ne soient pas disponibles dans les versions uniques et / ou combinées susmentionnées. Il est recommandé de TOUJOURS demander la faisabilité.

NOTA: Puede suceder que algunos modelos no estén disponibles en las versiones citadas, ya sean individuales o combinadas. Se aconseja consultar SIEMPRE la viabilidad.

Attacchi filettati / Threaded connections / Raccords filetés / Conexiones roscadas

IT

Attacchi
Connections
Raccords
Conexiones

Voltaggio
Voltage
Voltage
Voltaje

P. max = 6 bar (600 kPa)

Codice / Code / Code / Códice

DN 20

12 Vdc

RM030000 001

12 V/50 Hz

RM030000 004

24 Vdc

RM030000 005

24 V/50 Hz

RM030000 003

110 V/50-60 Hz

RM030000 002

230 V/50-60 Hz

RM030000 008

EN

DN 25

12 Vdc

RM040000 001

12 V/50 Hz

RM040000 004

24 Vdc

RM040000 005

24 V/50 Hz

RM040000 003

110 V/50-60 Hz

RM040000 002

230 V/50-60 Hz

RM040000 008

FR

DN 32

12 Vdc

RM050000 001

12 V/50 Hz

RM050000 004

24 Vdc

RM050000 005

24 V/50 Hz

RM050000 003

110 V/50-60 Hz

RM050000 002

230 V/50-60 Hz

RM050000 008

DN 40

12 Vdc

RM060000 001

12 V/50 Hz

RM060000 004

24 Vdc

RM060000 005

24 V/50 Hz

RM060000 003

110 V/50-60 Hz

RM060000 002

230 V/50-60 Hz

RM060000 008

ES

DN 50

12 Vdc

RM070000 001

12 V/50 Hz

RM070000 004

24 Vdc

RM070000 005

24 V/50 Hz

RM070000 003

110 V/50-60 Hz

RM070000 002

230 V/50-60 Hz

RM070000 008

Attacchi flangiati / Flanged connections / Raccords à brides / Conexiones embridadas

Attacchi Connections Raccords Conexiones	Vtaggio Voltage Voltage Voltage Voltaje	P. max = 6 bar (600 kPa)	
		Codice / Code / Code / Código	
DN 25	12 Vdc	RM250000	001
	12 V/50 Hz	RM250000	004
	24 Vdc	RM250000	005
	24 V/50 Hz	RM250000	003
	110 V/50-60 Hz	RM250000	002
	230 V/50-60 Hz	RM250000	008
DN 32	12 Vdc	RM320000	001
	12 V/50 Hz	RM320000	004
	24 Vdc	RM320000	005
	24 V/50 Hz	RM320000	003
	110 V/50-60 Hz	RM320000	002
	230 V/50-60 Hz	RM320000	008
DN 40	12 Vdc	RM400000	001
	12 V/50 Hz	RM400000	004
	24 Vdc	RM400000	005
	24 V/50 Hz	RM400000	003
	110 V/50-60 Hz	RM400000	002
	230 V/50-60 Hz	RM400000	008
DN 50	12 Vdc	RM500000	001
	12 V/50 Hz	RM500000	004
	24 Vdc	RM500000	005
	24 V/50 Hz	RM500000	003
	110 V/50-60 Hz	RM500000	002
	230 V/50-60 Hz	RM500000	008

IT

EN

FR

ES

IT

Fotografie e disegni contenuti nel presente documento, incluse posizioni di componenti (es. bobine, connettori, ecc.), sono da considerarsi puramente indicativi, non vincolanti e sono inseriti a solo scopo dimostrativo.

Ci riserviamo qualsiasi modifica tecnica e costruttiva.

EN

Pictures and drawings in this document, including positions of components (e.g. coils, connectors, etc.), are to be considered purely indicative, they are not binding and are included for demonstration purposes only.

We reserve the right to any technical and construction changes.

FR

Les photographies et les dessins figurant dans ce document, y compris les positions des composants (par ex. les bobines, les connecteurs, etc.), doivent être considérés comme purement indicatifs, ils ne sont pas contraignants et sont inclus uniquement à des fins de démonstration.

Nous nous réservons le droit d'effectuer toute modification technique et de fabrication.

ES

Las fotografías y los dibujos de este documento, incluidas las posiciones de los componentes (por ejemplo, bobinas, conectores, etc.), deben considerarse meramente indicativos, no son vinculantes y se incluyen únicamente con fines de demostración.

Nos reservamos el derecho de realizar cualquier cambio técnico y estructural.

MADAS[®]